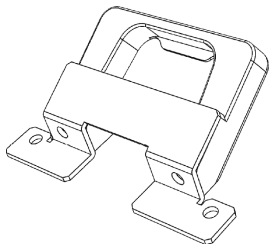


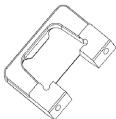


Scan the QR code to verify that you have the latest instructions or visit [vaultenclosures.com/instructions](http://vaultenclosures.com/instructions)



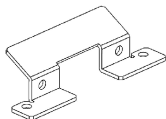
## PARTS INCLUDED

**A**



Base  
(1)

**B**



Bracket  
(1)

**C**



10-32x3/8  
Pan Head Screw  
(4)

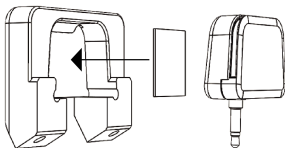
**D**



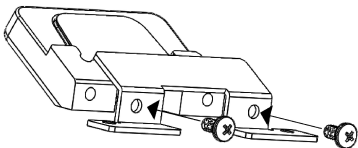
1x1 Dual  
Sided Adhesive  
(1)



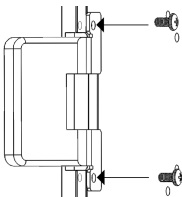
1. Install the Dual Sided Adhesive into the Base first and then the card reader.



2. Attach the Bracket to the Base using the 10-32x3/8 Pan Head screws.



3. Attach the Bracket to the PRO backplate using the 10-32x3/8 Pan Head screws.



REFER TO TABLET ENCLOSURE INSTRUCTIONS  
TO FINISH YOUR SOLUTIONS ASSEMBLY

